

Art Student Oil Colours

W


D

D

T

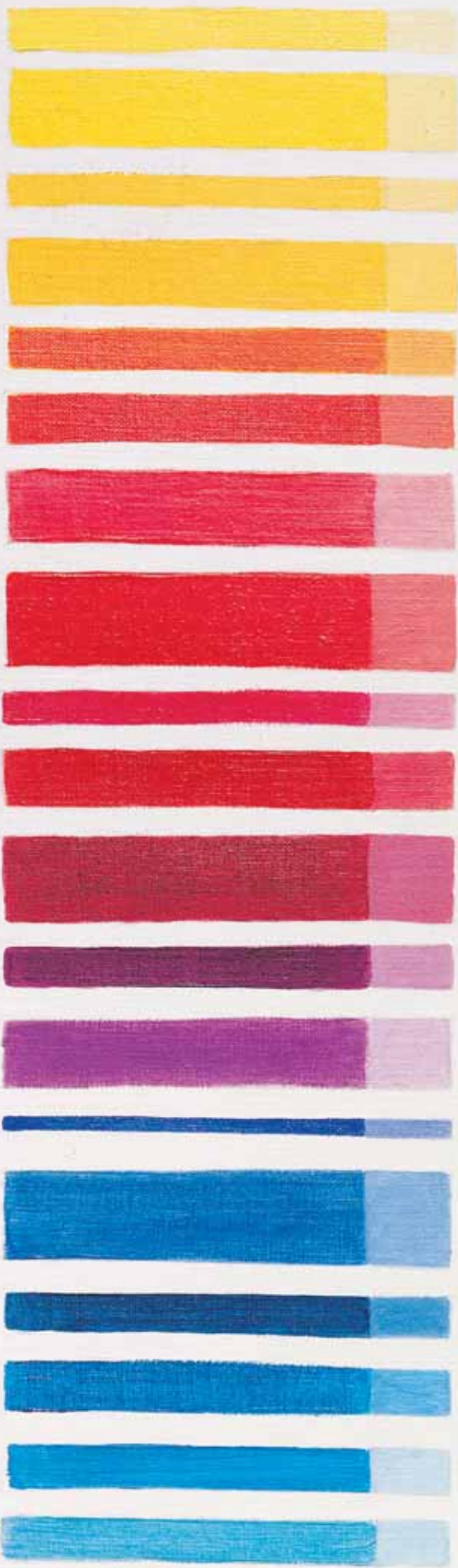
W

SENNELIER

The image features two paintbrushes. The one on the left is positioned vertically against a dark red background, with its bristles coated in a thick layer of red paint. The one on the right is also vertical, set against an orange background, with its bristles coated in red paint. A white rectangular text box is centered between the two brushes.

**Sennelier Etude Art Student Oil Colours are traditionally crafted with the same attention to quality that has made Sennelier Artist Oil Colours the premier name in fine art oils.**

**The vibrant and intense colours of this range feature excellent stability in colour mixing and lightfastness. The buttery texture allows smooth brushwork in thick applications or glazing. A comprehensive 36 colour range features a traditional palette of established colours, perfect for artists of any ability. Three accurate primaries are optimized for colour mixing, enabling the artist to create a vast palette of colours. Etude's very affordable price allows students and beginners to experience the renowned Sennelier quality that has made it the standard for over a century. For professional artists, the large 200ml. tubes are the perfect combination of price and quality, especially when working in large format or thick application.**



501 Lemon Yellow  
PY4 PY3 PW6 *Transp. / Op. ★★★ n.r.*

539 Cad. Yellow Light Hue (Primary)  
PY1 PW6 *Trans. / Op. ★★★ I*

543 Cadmium Yellow Deep Hue  
PY3 PY1:1 PW6 *Trans. / Op. ★★★ n.r.*

547 Cadmium Yellow Orange Hue  
PY1:1 *Transp. / Op. ★★★ n.r.*

615 Cadmium Red Orange Hue  
PY13 PR4 *Transp. / Op. ★★ n.r.*

613 Cadmium Red Light Hue  
PR4 PR3 *Opaque ★★★ n.r.*

681 Bright Red  
PR254 *Opaque ★★★ n.r.*

674 Vermilion  
PR3 PW6 *Opaque ★★★ n.r.*

606 Cad. Red Deep Hue (Primaire)  
PV19 *Opaque ★★★ I*

689 Alizarin Crimson  
PR83 PY13 *Transp. / Op. ★★ n.r.*

635 Carmine  
PR83 PV23 *Transp. / Op. ★★ III*

913 Cobalt Violet Deep Hue  
PB29 PR48:2 *Transp. / Op. ★★ n.r.*

911 Cobalt Violet Light Hue  
PV16 PW6 *Transp. / Op. ★★★ I*

357 Ultramarine Blue  
PB29 *Transp. / Op. ★★★ I*

303 Cobalt Blue Hue  
PB29 PB15:3 PW4 *Op. ★★★ I*

360 Phthalo Blue  
PB15:3 PBk9 PV23 *Transp. / Op. ★★★ I*

323 Ceruleum Blue Hue (Primaire)  
PB15:4 *Transp. / Op. ★★★ I*

320 Azure Blue  
PB15:3 PW6 *Transp. / Op. ★★★ I*

341 Turquoise  
PB15:3 PG7 PW4 PW6 *Op. ★★★ I*



807 Phthalo Green Deep  
PG7 PB15:3 PY1:1 *Transp. / Op. ★★★ n.r.*

869 Viridian  
PG7 *Transp. / Opaque ★★★ I*

847 Emerald Green  
PG7 PY1 PW6 *Opaque ★★★ n.r.*

873 Phthalo Green Deep  
PG7 PY1:1 *Transp. / Op. ★★★ n.r.*

871 Bright Yellow Green  
PG36 PY1 PW6 *Opaque ★★★ n.r.*

805 Phthalo Green Light  
PG7 PY1 PBk9 PW6 *Op. ★★★ n.r.*

213 Green Earth  
PG23 PY42 PG7 PBk11 *Op. ★★★ I*

205 Raw Umber  
PR101 PY42 PBk11 *Op. ★★★ I*

567 Naples Yellow  
PY1 PY42 PW6 *Opaque ★★★ n.r.*

252 Yellow Ochre  
PY42 PR101 PW6 PBk11 *Op. ★★★ I*

208 Raw Sienna  
PR101 PY42 PBk11 *Op. ★★★ I*

250 Flesh Ochre  
PR101 PY42 PW6 *Op. ★★★ I*

259 Red Ochre  
PR101 PY42 PBk11 *Op. ★★★ I*

211 Burnt Sienna  
PR101 PY42 PBk11 *Op. ★★★ I*

202 Burnt Umber  
PR101 PY42 PBk11 *Op. ★★★ I*

755 Ivory Black  
PBk9 *Opaque ★★★ I*

116 Titanium White  
PW6 PW4 *Opaque ★★★ I*

\*\*\* Lightfast \*\* Good lightfastness \* Moderate lightfastness 0 Fugitive

I, II, III ASTM D4302 (n.r.: not rated)



Etude 36 colour range available in 34ml and 200ml tubes

---

*Available at:*

**SENNELIER**

*modern since 1887*

E-mail: [max.sauer@wanadoo.fr](mailto:max.sauer@wanadoo.fr)  
Internet: [www.max-sauer.com](http://www.max-sauer.com)